

LED lighting systems

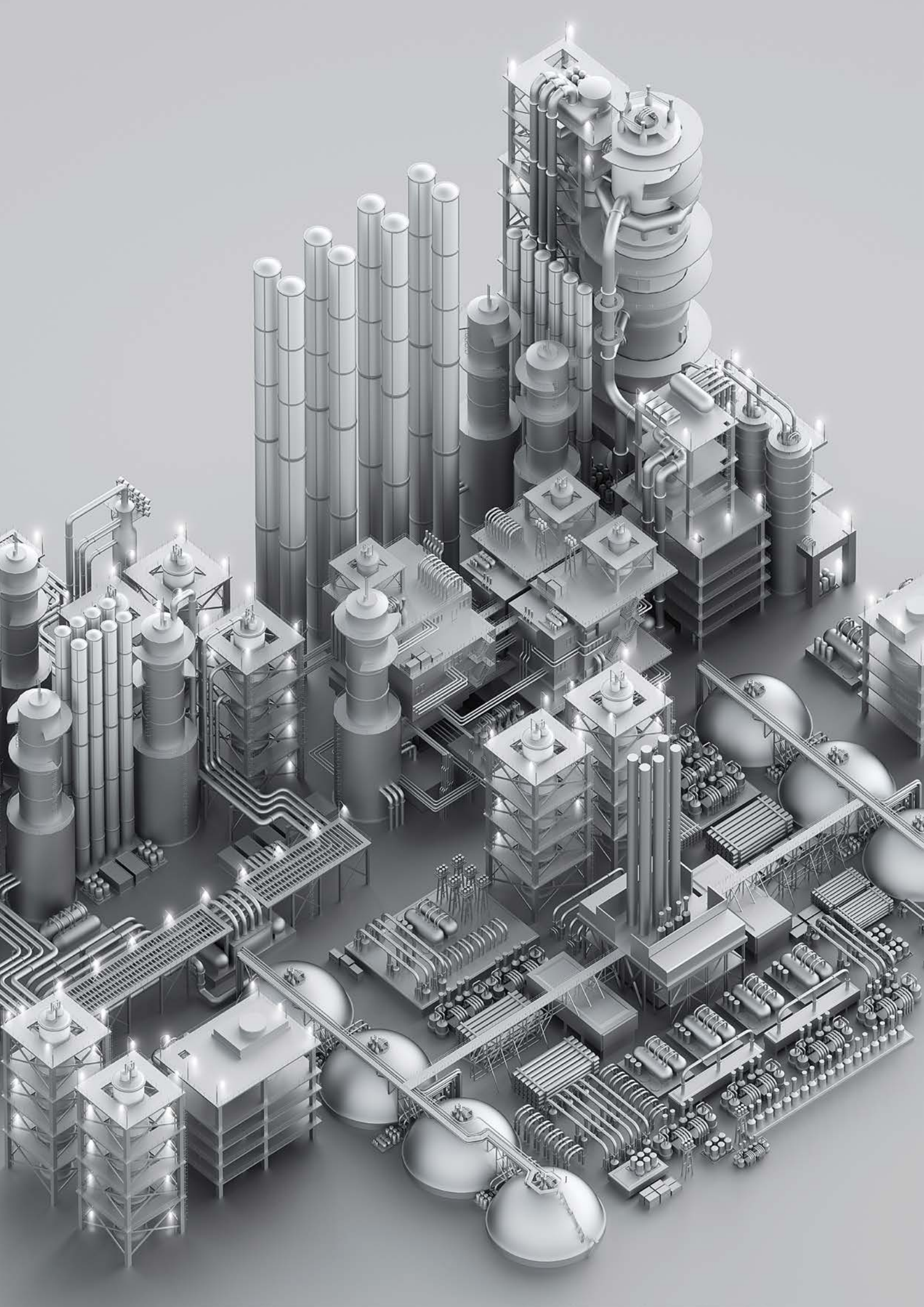
Solutions for hazardous areas
and safe area industry





Contents

Introduction	5
LED technology	6
Zone 1 21	7
Zone 2 22	10
Industrial and safe areas	12



A 3D rendering of industrial structures, including two tall, multi-tiered towers and a large spherical storage tank, all illuminated with bright lights. The scene is set against a light gray background.

Covering your overall lighting needs

As a global leader in safety and protection in hazardous areas and environments, the BARTEC Group strives for excellence in everything we do.

Through deep-rooted knowledge and experience, we are able to foresee our customers' specific needs and consistently provide them with innovative holistic systems and solutions.

Driven by perfect results for our customers, we compiled the most comprehensive portfolio of premium products, solutions and state-of-the-art technologies, worldwide.

It is our goal to offer peace of mind – as a one-stop shop for excellent integrated safety systems for all industries. This also includes lighting.

Allow us to introduce our LED lighting portfolio.

Taking advantage of LED technology

LED technology is becoming increasingly popular on the explosion-proof market. Thanks to the technology's characteristics of high luminous efficiency and low power consumption, they offer a solution capable of radically changing the future of industrial lighting.

When applied in potentially explosive environments, LED technology, compared to traditional lighting sources, presents vital advantages that include:

Compact size

LEDs are generally smaller than other light sources; thus they are the ideal solution for small dimensioned applications.

Lower heat emission

LEDs have low heat emission, making the LED's temperature class lower than those of traditional solutions.

Directed lighting

LEDs emit light in a specific direction, reducing the need of floodlights that in turn, diminish the lighting fixtures' efficiency.

Improved safety

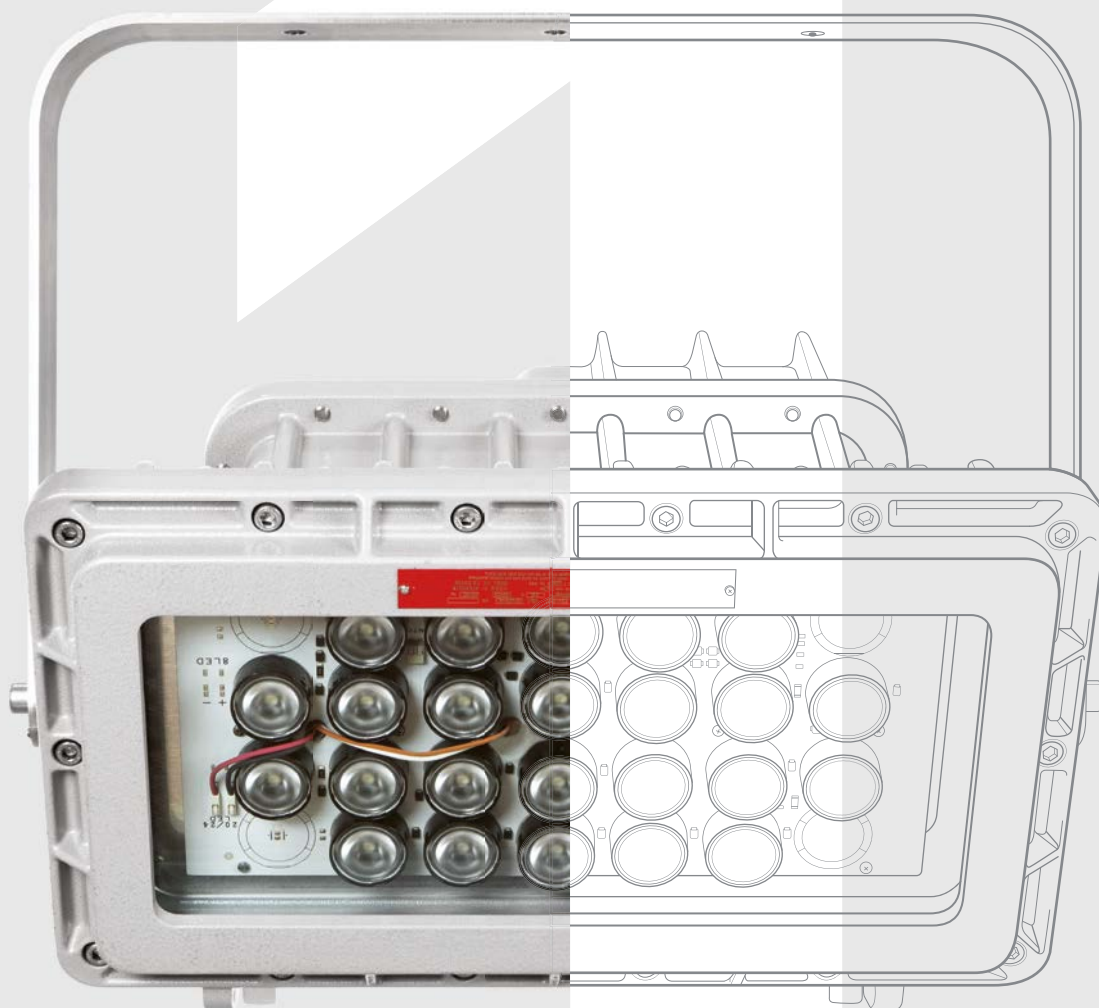
Thanks to their excellent color rendition, LEDs provide better visibility, even in critical conditions.

Robust and efficient

Compared to other traditional light sources, LED devices are more robust and reliable and reduce energy and maintenance costs, while improving security wherever they are installed within the plant.

Smaller environmental footprint

Compared to traditional lighting fixtures and due to the absence of toxic substances, the environmental impact of LEDs is zero. Moreover, considering the directionality of the light as emitted by the LEDs, light pollution is greatly reduced.



Tubular lighting fixture EVFG



This lighting fixture is equipped with strip LED lamps; especially indicated for highly corrosive environments and marine applications.

Typical applications: Pipeline & refineries, offshore, oil and gas production and drilling, outdoor illumination for towers and tanks (stairwells).



Well-glass lighting fixture EVAC LED



This lighting fixture is ideal for indoor and outdoor applications in those areas where concentrated, diffused or ambient light is required.

Typical applications: Offshore, oil and gas production and drilling, hazardous dust areas – e.g. cereals, flour, sugar or wood industries.



Tank lighting fixture EVO



This lighting fixture is mounted in a porthole and is used to illuminate the interior of tanks.

Typical applications: Ideal for targeted illumination, safety illumination, industrial, chemical industry such as spraying and painting or in clean rooms.



Bulkhead lighting fixture EVT



This lighting fixture is normally used to illuminate places like tunnels and walking passages, where smaller and flat shape light is required.

Typical applications: Ideal for targeted illumination, safety illumination, industrial, chemical industry such as spraying and painting or in clean rooms.



Floodlight RCDE LED



This floodlight is ideal for both indoor as well as outdoor applications.

Typical applications: Offshore, oil and gas production and drilling, interior and exterior illumination of large areas and buildings.



Floodlight SFD-SFDE LED



This floodlight is ideal for both indoor as well as outdoor applications.

Typical applications: Offshore, oil and gas production and drilling, interior and exterior illumination of large areas and buildings.



Exit/Signal lighting fixture EXL



This compact model has been designed as an emergency light source. A customized sign sticker is available on request.

Typical Applications: Ideal for targeted illumination, safety illumination, Industrial, chemical industry such as spraying and painting or clean rooms.



Obstruction lighting fixture LIOL/MIOL



This lighting fixture is normally installed on towers or high buildings as a warning signal for an obstacle.

Typical applications: High and large buildings, masts, cranes, wind turbines, chimneys, aviation obstruction for targeting traffic management, Offshore as signal and orientation signing on platforms, buoys.





Well-glass lighting fixture SFLP LED



This lighting fixture is ideal for indoor and outdoor applications, in areas where concentrated, diffused or ambient light is required.

Typical applications: Offshore, oil and gas production and drilling, hazardous dust areas – e.g. cereals, flour, sugar or wood industries.



Floodlight SFLA LED



This floodlight is ideal for both indoor as well as outdoor applications.

Typical applications: Ideal for medium and high suspension heights, offshore, oil and gas, pipelines or refineries.



Floodlight SFLJ LED



This floodlight is ideal for both indoor as well as outdoor applications.

Typical applications: Ideal for medium and high suspension heights, offshore, oil and gas, pipelines or refineries.



(1) In progress, coming soon



INDUSTRIAL AND SAFE AREAS

Linear lighting fixture WFL LED



This lighting fixture is equipped with strip LED lamps, especially indicated for highly corrosive environments and suitable for heavy duty applications.

Typical applications: Pipeline & refineries, offshore, oil and gas production and drilling, outdoor illumination for towers and tanks (stairwells).



Floodlight WFLA LED



This floodlight is ideal for lighting sports facilities, car parks, industrial and commercial areas or wherever you need a power product.

Available versions:

- Without lens to increase efficiency
- With asymmetrical lens, vertex at 50deg



Well-glass lighting fixture WFLP LED



This floodlight is ideal for external and internal applications and is characterized by its tempering and versatility.

Available versions:

- Without lens to increase efficiency
- With asymmetrical lens, vertex at 50deg
- With asymmetrical road lens, vertex at 30deg
- With symmetric road lens, ideal for cycle paths



Floodlight WFLJ LED



This floodlight is ideal for exterior and interior applications and is characterized by its tempering and versatility.



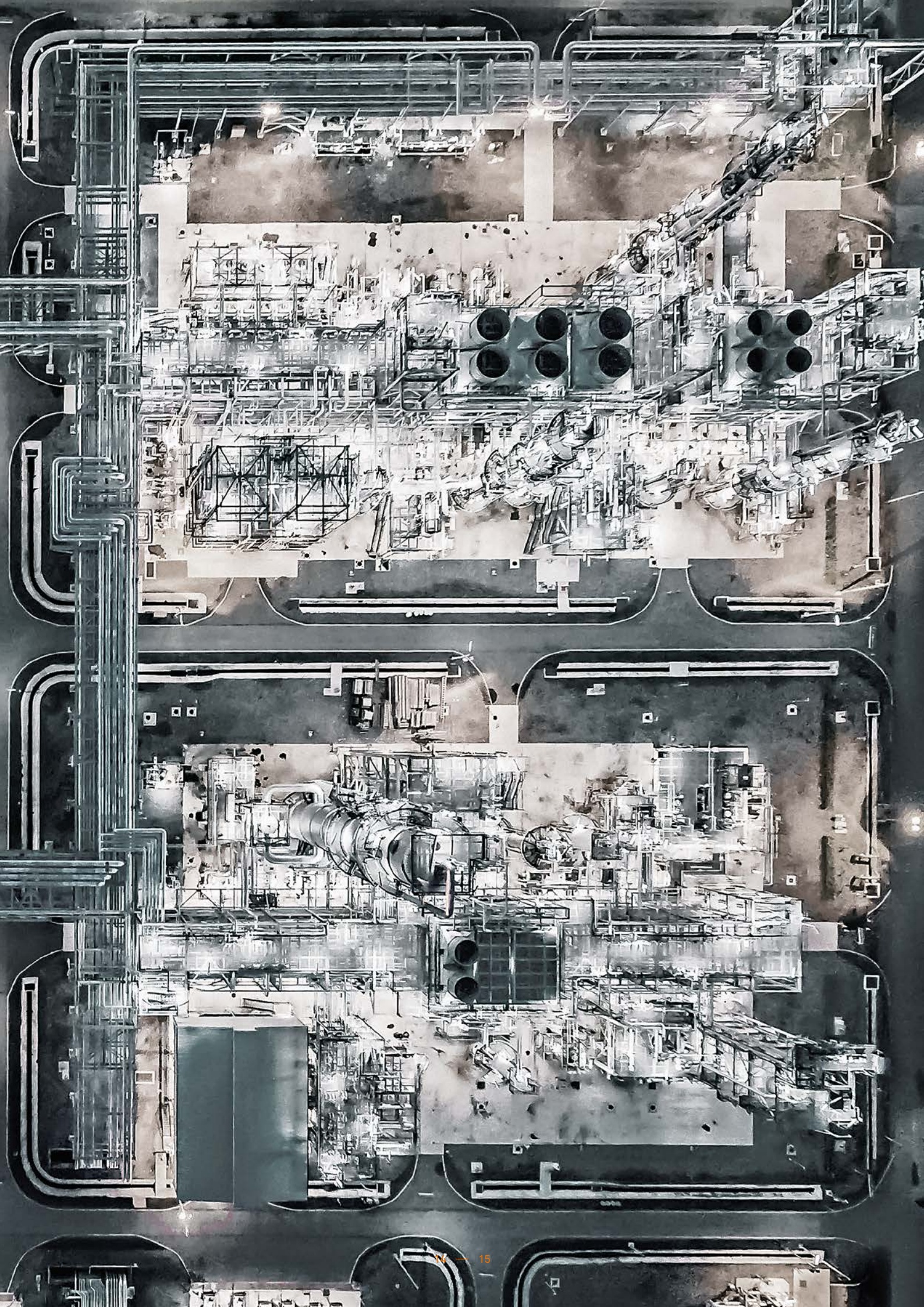
Street Lighting/Floodlight STREET



This equipment is suitable for civil, commercial, industrial and public areas where protection against dust and moisture is required. It is normally used to light up streets, urban areas, parking lots and residential areas as well as industrial and civil buildings.

Available versions:

– With asymmetrical road lens, vertex at 30deg



BARTEC

Business Unit
Electrical Safety Systems
Max-Eyth-Str. 16
97980 Bad Mergentheim
Germany

Phone: +49 7931 597 0
info@bartec.de
www.bartec.de

FEAM S.r.l. a Socio Unico
Via Mario Pagano 3
20090 Trezzano
S/Naviglio (MI)
Italy

Phone: +3902 484741
info@feam-ex.com
www.feam-ex.com

Nuova ASP S.r.l. a Socio Unico
Via Mario Pagano 7/9
20090 Trezzano
S/Naviglio (MI)
Italy

Phone: +3902 90686013
info@nouvaasp.com
www.nouvaasp.net

Find your local sales contact:
www.bartec.de/en/contact